

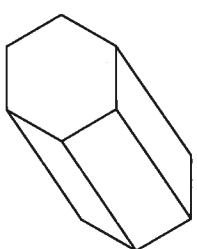
Making Models from Figures

Quick Review



▶ You can use different figures to build models of solids.

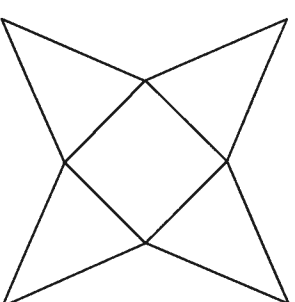
This box was made from 2 hexagons and 6 rectangles.



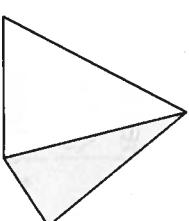
▶ You can make a model of a solid from one cutout.

The cutout is called a **net**.

This is a net for a square pyramid. It shows all the faces of the square pyramid joined in 1 piece.



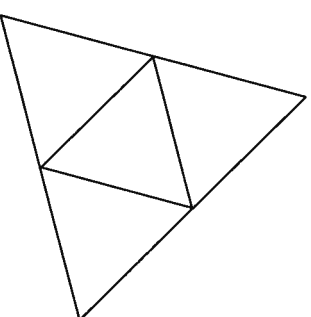
The net can be folded to make a model of a square pyramid.



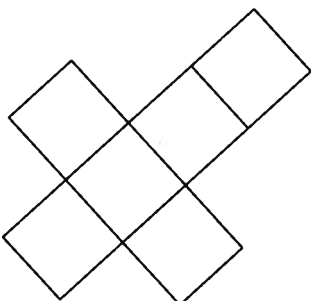
Try These

1. Which solid will each net fold into?

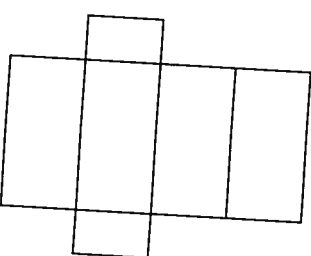
a)



b)



c)



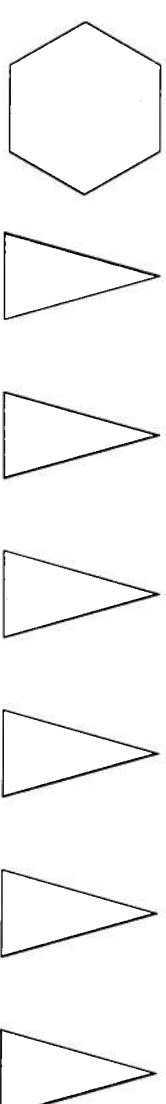
Practice

1. Name the solid you could build with each set of figures.

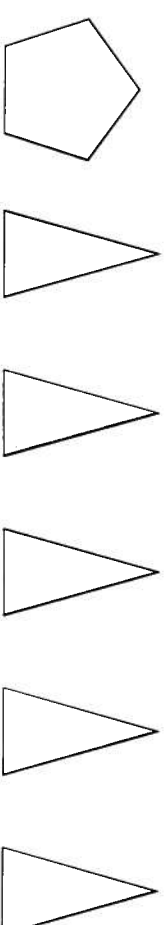
a)



b)



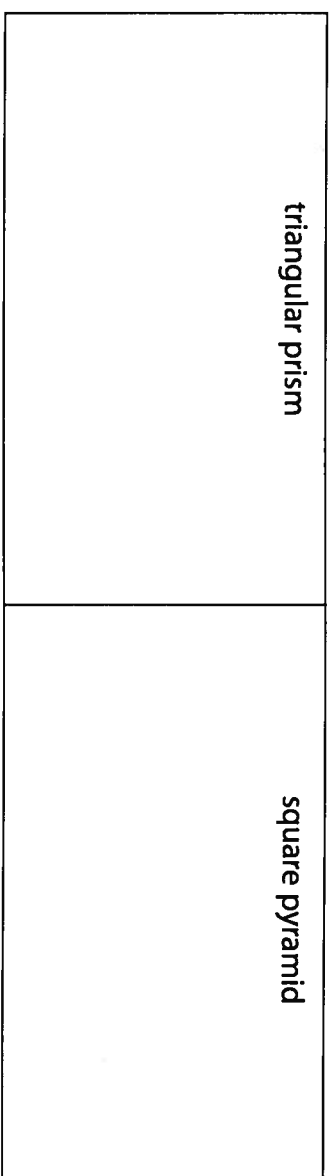
c)



2. Draw the figures you would need to build a model of each solid.

triangular prism

square pyramid



Stretch Your Thinking

Draw a net for this solid.

