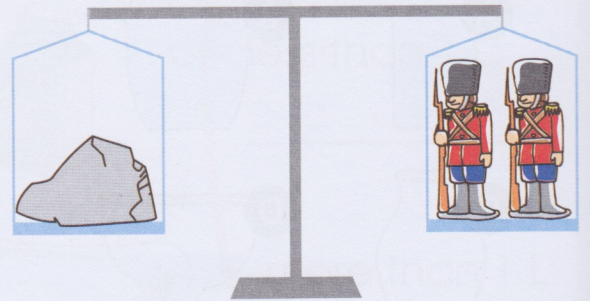
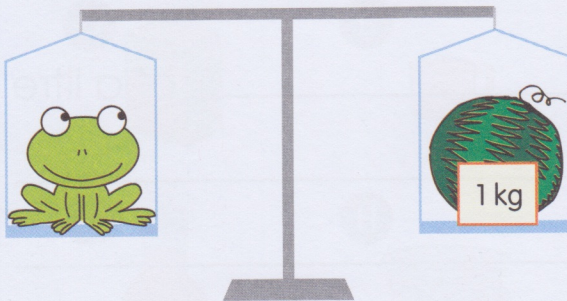
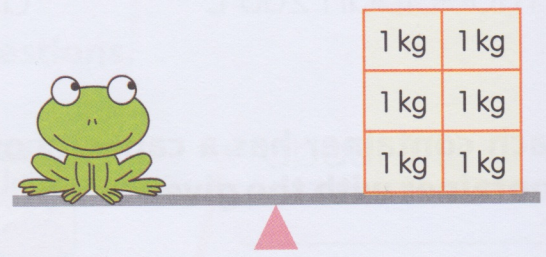
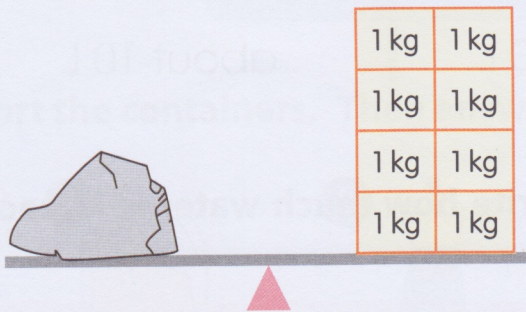
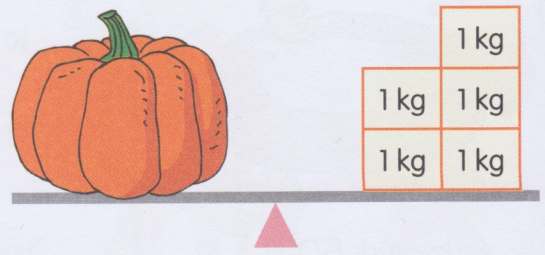
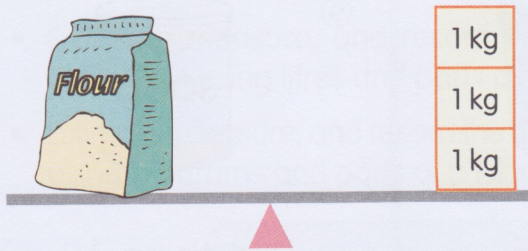


Write the mass of each object. Then answer the questions.



⑬

**Mass**

Flour: \_\_\_\_\_

Pumpkin: \_\_\_\_\_

Rock: \_\_\_\_\_

Frog: \_\_\_\_\_

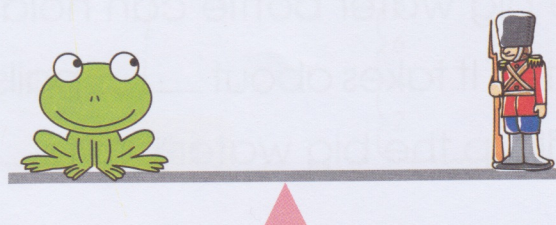
Watermelon: \_\_\_\_\_

Tin soldier: \_\_\_\_\_

⑭ The \_\_\_\_\_ and the \_\_\_\_\_ have the same weight.

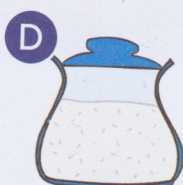
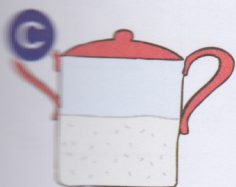
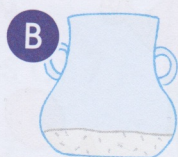
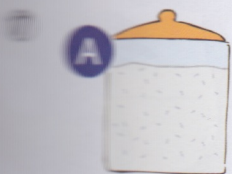
⑮ \_\_\_\_\_ bags of flour are needed to balance the frog.

⑯ Draw the correct number of 1 kg to balance the objects.



Each container can hold 1 kg of sugar. Write how much sugar is in each container with the given words.

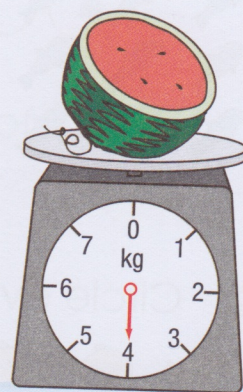
a quarter      half      three quarters



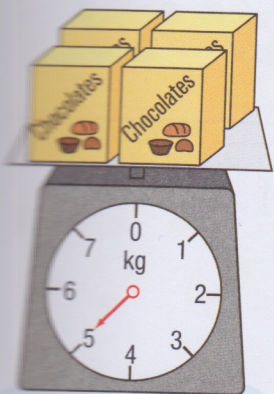
- A \_\_\_\_\_ of a kilogram
- B \_\_\_\_\_
- C \_\_\_\_\_
- D \_\_\_\_\_

Look at the pictures. Fill in the blanks.

- 11
- a. Half of a watermelon weighs \_\_\_\_\_ kg.
  - b. The whole watermelon weighs \_\_\_\_\_ kg.
  - c. If Jason cuts the half watermelon in half again, each piece will weigh \_\_\_\_\_ kg.



- 12
- a. 4 boxes of chocolates weigh \_\_\_\_\_ kg.
  - b. Each box of chocolates weighs \_\_\_\_\_ than 1 kg.



- c. \_\_\_\_\_ boxes of chocolates
- If I can lift 10 kg at a time, how many boxes of chocolates can I lift in one go?*
- \_\_\_\_\_ boxes of chocolates

